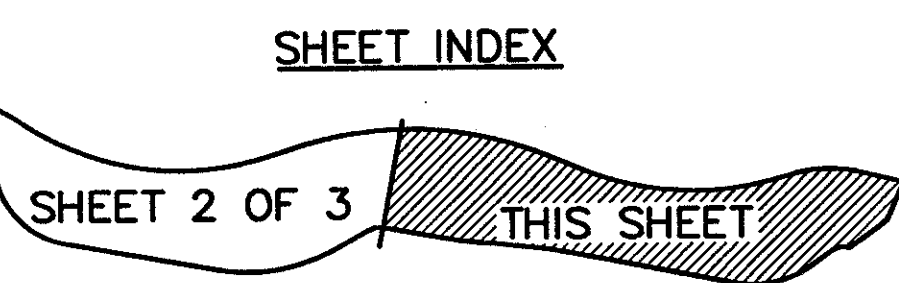
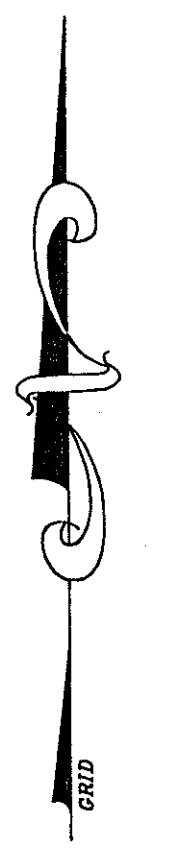
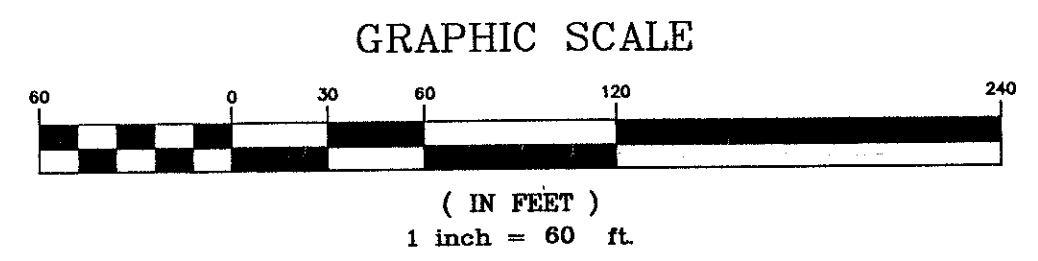
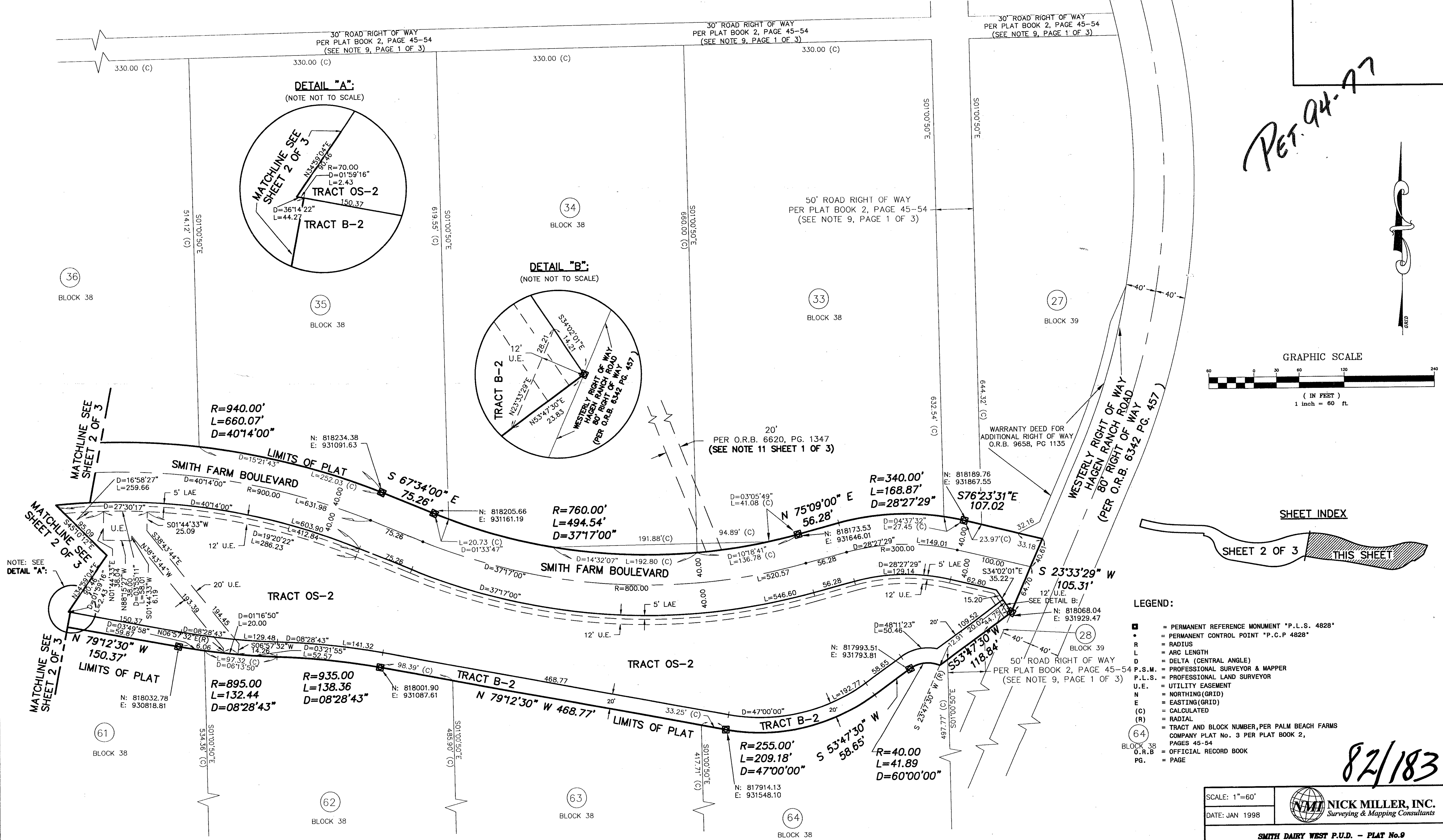


SMITH DAIRY WEST P.U.D. - PLAT No. 9
 BEING A REPLAT OF PART OF BLOCKS 38 AND 39 OF PALM BEACH FARMS
 COMPANY PLAT No. 3, AS RECORDED IN PLAT BOOK 2, PAGES
 45 THROUGH 54 OF THE PUBLIC RECORDS OF PALM BEACH COUNTY, FLORIDA
 IN PART OF SECTION 4, TOWNSHIP 45 SOUTH, RANGE 42 EAST,
 PALM BEACH COUNTY, FLORIDA
SHEET 3 OF 3 SHEETS
JANUARY 1998

183

0653-012

Pet. 94-77



- LEGEND:**
- = PERMANENT REFERENCE MONUMENT "P.L.S. 4828"
 - = PERMANENT CONTROL POINT "P.C.P. 4828"
 - R = RADIUS
 - L = ARC LENGTH
 - Δ = DELTA (CENTRAL ANGLE)
 - P.S.M. = PROFESSIONAL SURVEYOR & MAPPER
 - P.L.S. = PROFESSIONAL LAND SURVEYOR
 - U.E. = UTILITY EASEMENT
 - N = NORTHING (GRID)
 - E = EASTING (GRID)
 - (C) = CALCULATED
 - (R) = RADIAL
 - (B) = TRACT AND BLOCK NUMBER, PER PALM BEACH FARMS COMPANY PLAT No. 3 PER PLAT BOOK 2, PAGES 45-54
 - (64) = OFFICIAL RECORD BOOK
 - PG. = PAGE

NOTE: SEE DETAIL "A":

712
942

SUBDIVISION * Smith Dairy West
 BOOK 82 PAGE 183
 FLOOD ZONE 6 FLOOD MAP #1704
 ZONING PUD
 QUAD * 49
 ZIP CODE 33436
 PUD NAME Smith Dairy West

SCALE: 1"=60'
 DATE: JAN 1998

NICK MILLER, INC.
 Surveying & Mapping Consultants

SMITH DAIRY WEST P.U.D. - PLAT No. 9

2560 RCA Blvd., Suite 105 Palm Beach Gardens, Florida 33410 (561) 627-5200 D.B.P.R. Business License No. 4318	DRAWING NUMBER 94014EG
--	---------------------------

0653-012

82/183